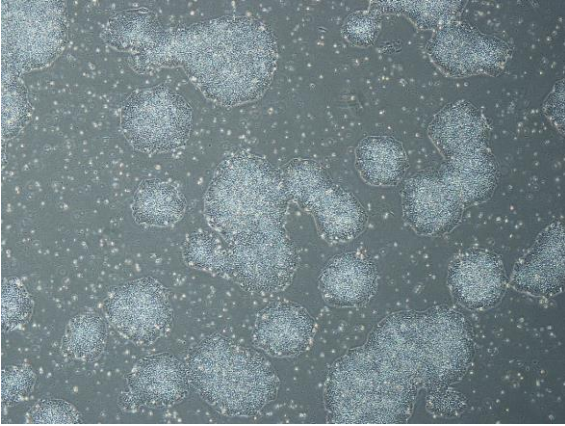
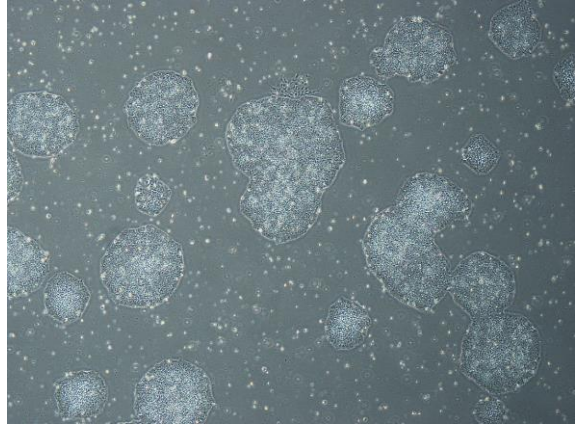


【 CiRA-j-1505 】 Morphology of iPSC colonies

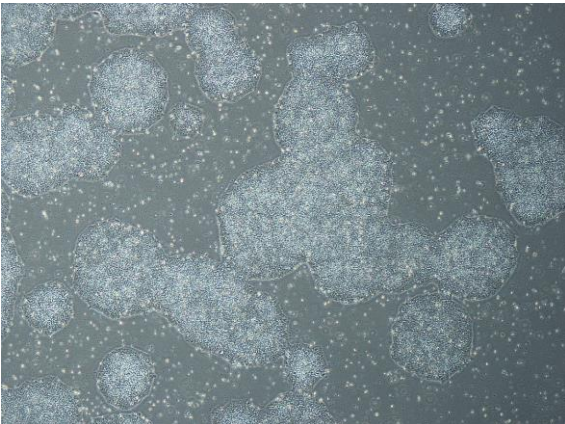
CiRA-j-1505-A: passage-3



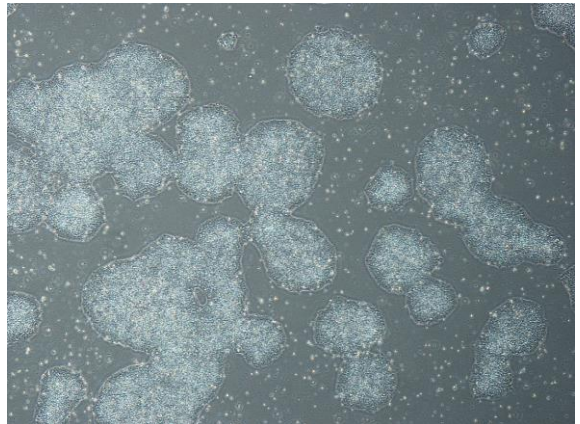
CiRA-j-1505-B: passage-3



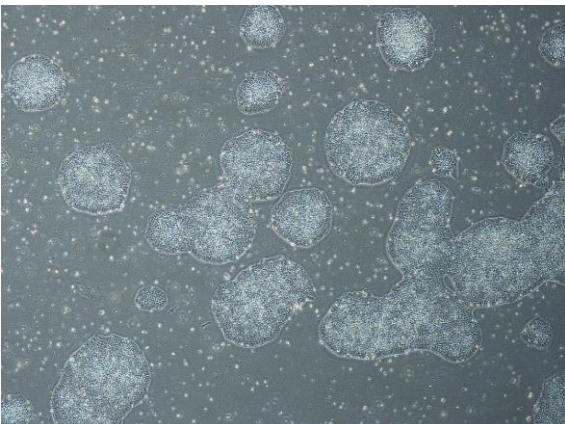
CiRA-j-1505-C: passage-3



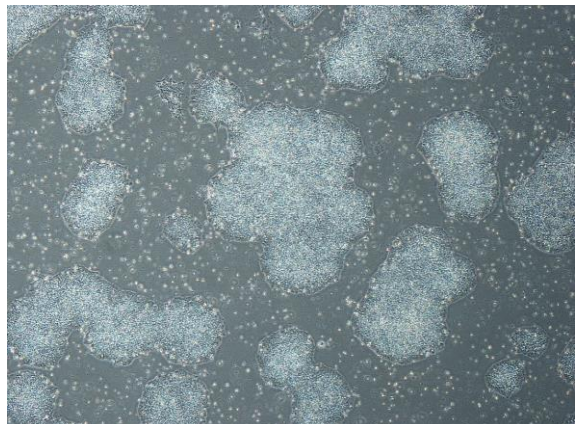
CiRA-j-1505-D: passage-3



CiRA-j-1505-E: passage-3



CiRA-j-1505-F: passage-3



(All images were captured at 4x magnification)